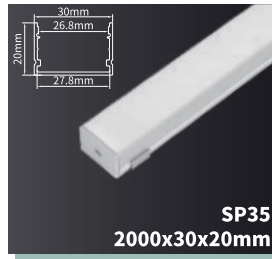
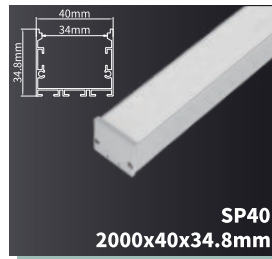


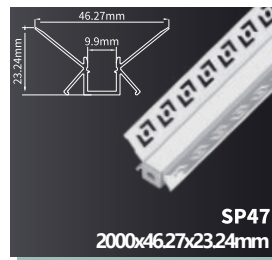
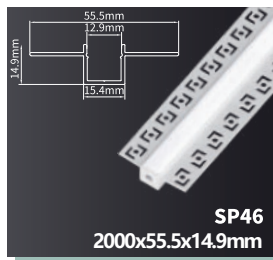
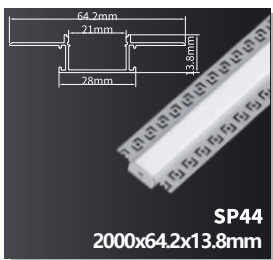
SPECIAL DISCOUNT -72%



SPECIAL DISCOUNT -72%



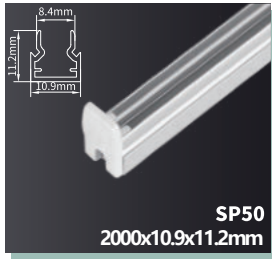
SPECIAL DISCOUNT -72%



SPECIAL DISCOUNT **72%**



SP49
2000x28.7x20.2mm



SP50
2000x10.9x11.2mm



SP51
2000x27.1x11.3mm



SP52
2000x21.3x25.6mm

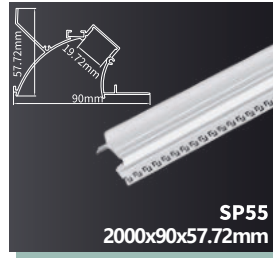
SPECIAL DISCOUNT **72%**



SP53
2000x95.45x70.14mm



SP54
2000x77.91x70.32mm



SP55
2000x90x57.72mm

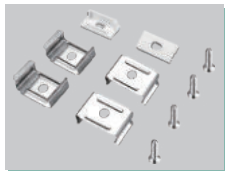


SP56
2000x69.1x69.1mm

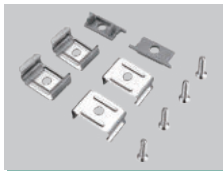


SP57
2000x36.4x60.2mm

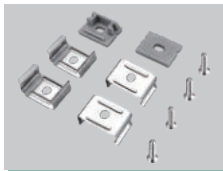
ACCESSORIES



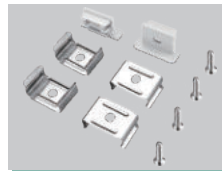
SP58



SP23



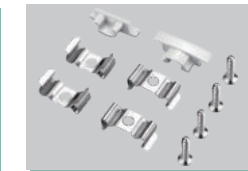
SP24



SP25



SP26



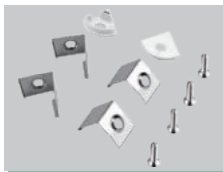
SP27



SP28



SP29



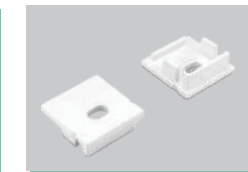
SP30



SP31



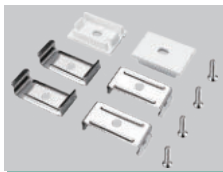
SP32



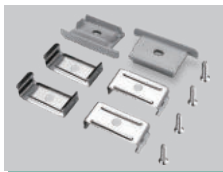
SP33



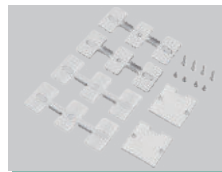
SP34



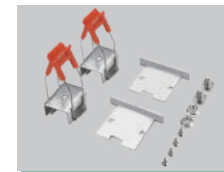
SP35/SP37



SP36



SP38



SP39



SP40



SP41



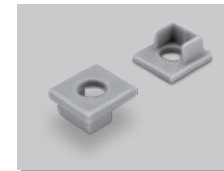
SP42



SP43



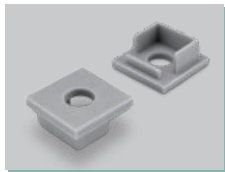
SP56



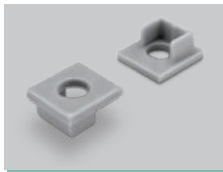
SP57



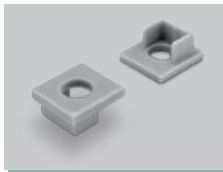
SP44/SP45



SP46



SP47/SP48



SP49



SP50



SP51

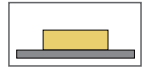


SP52



SP53

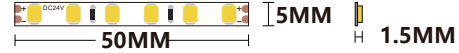
SPECIAL DISCOUNT -70% Model: STL005 Voltage: DC24V Duration: 25000h



Code : S0301 / S0302 / S0303



Code : S0304 / S0305



Code : S0306 / S0307 / S0308

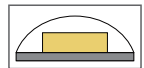


Code : S0309 / S0310 / S0311 / S0312 / S0313



Product code	Power	CCT	LED quantity	Lumens	Beam Angle	CRI	IP	Dimensions
S0301	8W/M	3000K	70 LED/M	1057lm/M	120°	≥80	20	5000x8x1.5mm
S0302	8W/M	4000K	70 LED/M	1093lm/M	120°	≥80	20	5000x8x1.5mm
S0303	8W/M	6500K	70 LED/M	1072lm/M	120°	≥80	20	5000x8x1.5mm
S0304	8W/M	3000K	120 LED/M	959lm/M	120°	≥80	20	5000x5x1.5mm
S0305	8W/M	4000K	120 LED/M	984lm/M	120°	≥80	20	5000x5x1.5mm
S0306	12W/M	3000K	140 LED/M	1624lm/M	120°	≥80	20	5000x8x1.5mm
S0307	12W/M	4000K	140 LED/M	1699lm/M	120°	≥80	20	5000x8x1.5mm
S0308	12W/M	6500K	140 LED/M	1631lm/M	120°	≥80	20	5000x8x1.5mm
S0309	20W/M	3000K	238 LED/M	2608lm/M	120°	≥80	20	5000x10x1.5mm
S0310	20W/M	4000K	238 LED/M	2682lm/M	120°	≥80	20	5000x10x1.5mm
S0311	20W/M	6500K	238 LED/M	2644lm/M	120°	≥80	20	5000x10x1.5mm
S0312	20W/M	3000K	238 LED/M	2102lm/M	120°	≥90	20	5000x10x1.5mm
S0313	20W/M	4000K	238 LED/M	2228lm/M	120°	≥90	20	5000x10x1.5mm

SPECIAL DISCOUNT -70% Model: STL005 Voltage: DC24V Duration: 25000h



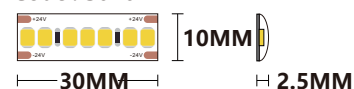
Code : S0401 / S0402



Code : S0403

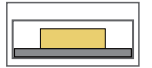


Code : S0404



Product code	Power	CCT	LED quantity	Lumens	Beam Angle	CRI	IP	Dimensions
S0401	8W/M	3000K	70 LED/M	1072lm/M	120°	≥80	44	5000x8x2.5mm
S0402	8W/M	4000K	70 LED/M	984lm/M	120°	≥80	44	5000x8x2.5mm
S0403	12W/M	3000K	140 LED/M	1585lm/M	120°	≥80	44	5000x8x2.5mm
S0404	20W/M	3000K	238 LED/M	2346lm/M	120°	≥80	44	5000x10x2.5mm

SPECIAL DISCOUNT **-70%** Model: STL005 Voltage: DC24V Duration: 25000h



Code : S0501

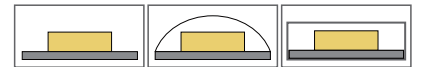


Code : S0501

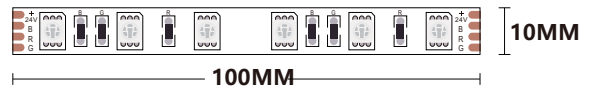


Product code	Power	CCT	LED quantity	Lumens	Beam Angle	CRI	IP	Dimensions
S0501	8W/M	3000K	70 LED/M	984lm/M	120°	≥80	65	5000x10x4mm
S0502	12W/M	3000K	140 LED/M	1580lm/M	120°	≥80	65	5000x10x4mm

RGB SPECIAL DISCOUNT **-70%** Model: STL005 Voltage: DC24V Duration: 25000h



Code : S0601 / S0602 / S0603



Product code	Power	CCT	LED quantity	Lumens	Beam Angle	IP	Dimensions
S0601	13W/M	RGB	60 LED/M	513lm/M	120°	20	5000x10x2.1mm
S0602	13W/M	RGB	60 LED/M	500lm/M	120°	44	5000x10x2.8mm
S0603	13W/M	RGB	60 LED/M	501lm/M	120°	65	5000x12x4mm

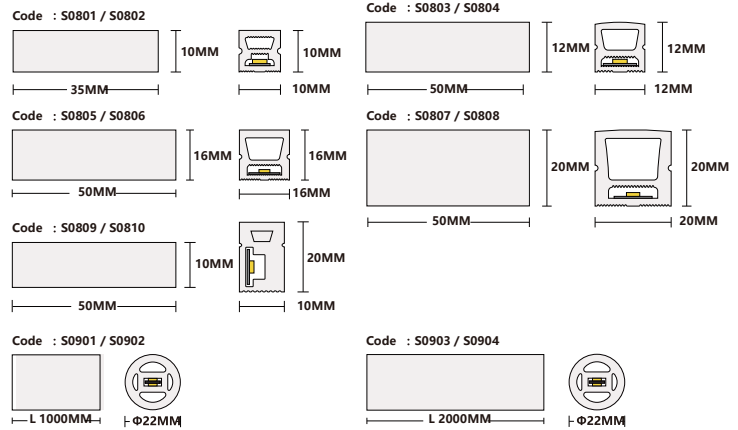
COB SPECIAL DISCOUNT -70% Model : STL002

Duration: 25000h



Product code	Power	CCT	LED quantity	Lumens	Beam Angle	CRI	Voltage	IP	Dimensions
S0207	11W	3000K	480 LED/M	910 lm/M	140°	≥90	DC24V	20	5000x8x1.5mm
S0208	11W	4000K	480 LED/M	1010 lm/M	140°	≥90	DC24V	20	5000x8x1.5mm
S0209	11W	3000K	480 LED/M	905lm/M	140°	≥90	DC12V	20	5000x8x1.5mm

NEON FLEXY SPECIAL DISCOUNT -65% Tensione: DC24V Duration: 25000h

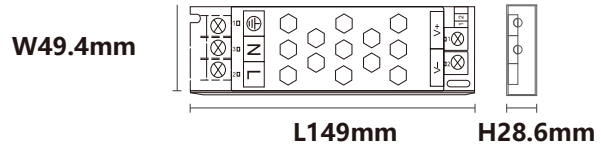


Product code	Power	CCT	LED quantity	Lumens	Beam Angle	CRI	IP	Dimensions
STL006-S0801	9.6W	3000K	168 LED/M	381lm/M	120°	≥90	65	5000x10x10mm
STL006-S0802	9.6W	4000K	168 LED/M	400lm/M	120°	≥90	65	5000x10x10mm
STL006-S0803	9.6W	3000K	120 LED/M	403lm/M	120°	≥90	65	5000x12x12mm
STL006-S0804	9.6W	4000K	120 LED/M	371lm/M	120°	≥90	65	5000x12x12mm
STL006-S0805	9.6W	3000K	120 LED/M	454lm/M	120°	≥90	65	5000x16x16mm
STL006-S0806	9.6W	4000K	120 LED/M	463lm/M	120°	≥90	65	5000x16x16mm
STL006-S0807	9.6W	3000K	120 LED/M	421lm/M	120°	≥90	65	5000x20x20mm
STL006-S0808	9.6W	4000K	120 LED/M	446lm/M	120°	≥90	65	5000x20x20mm
STL006-S0809	9.6W	3000K	120 LED/M	209lm/M	120°	≥90	65	5000x10x20mm
STL006-S0810	9.6W	4000K	120 LED/M	247lm/M	120°	≥90	65	5000x10x20mm
STL007-S0901	19.2W	3000K	288 LED/M	1197lm/M	360°	≥90	65	1000xD22mm
STL007-S0902	19.2W	4000K	288 LED/M	1292lm/M	360°	≥90	65	1000xD22mm
STL007-S0903	38.4W	3000K	288 LED/M	1197lm/M	360°	≥90	65	2000xD22mm
STL007-S0904	38.4W	4000K	288 LED/M	1292lm/M	360°	≥90	65	2000xD22mm

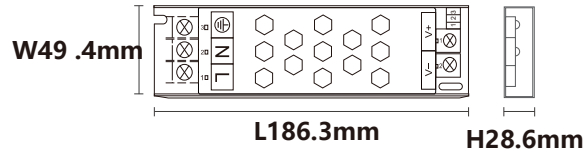
SPECIAL DISCOUNT **-60%** Model : STL004 Input voltage : 220-240V



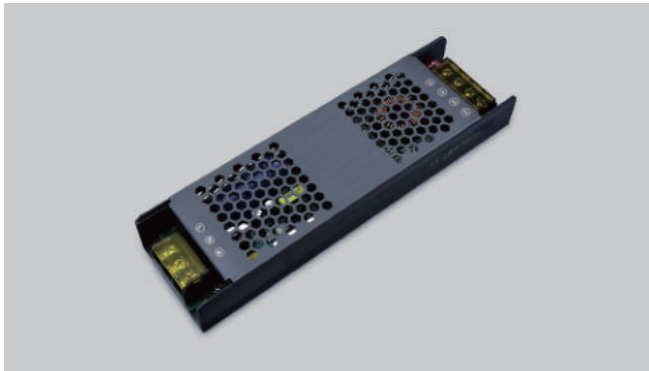
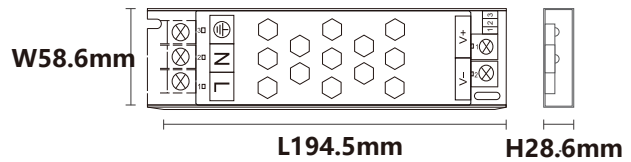
Product code	Power	PF	IP	I(MAX)	Voltage	Dimensions
SA01	60W	0.5	20	2.5A	24V	149x28.6x49.4mm



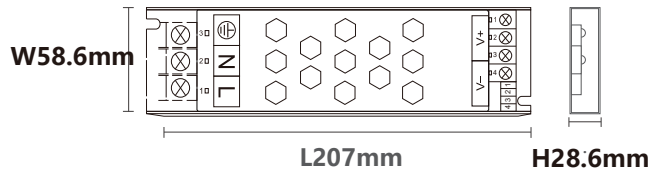
Product code	Power	PF	IP	I(MAX)	Voltage	Dimensions
SA02	100W	0.5	20	4.2A	24V	186.3x28.6x49.4mm
SA07	100W	0.5	20	8.4A	12V	186.3x28.6x49.4mm



Product code	Power	PF	IP	I(MAX)	Voltage	Dimensions
SA03	150W	0.5	20	6.3A	24V	194.5x28.6x58.6mm



Product code	Power	PF	IP	I(MAX)	Voltage	Dimensions
SA04	200W	0.5	20	8.3A	24V	207x28.6x58.6mm
SA08	200W	0.5	20	16.6A	12V	207x28.6x58.6mm



Product code	Power	PF	IP	I(MAX)	Voltage	Dimensions
SA05	300W	0.5	20	12.5A	24V	249x28.6x58.6mm

